



PROTECTIVE INDUSTRIAL PRODUCTS

CUT RESISTANT GARMENTS

www.pipusa.com

**KUT
GARD®**



PROTECTIVE INDUSTRIAL PRODUCTS

Kut Gard® ATA® PreventWear™ garments are essential in high-risk environments like glass manufacturing, particularly for employees working on the glass factory/fabrication floor. Our Made in the USA garments offer high-level protection in areas most harmful such as the neck, upper arm, upper inside leg and wrist, where major arteries are at risk.

Kut Gard® ATA® PreventWear™ garments are treated with an anti-microbial solution to help prevent the growth of bacteria and manufactured with 21CFR-approved materials for food contact, making them a lightweight alternative to heavier garments worn in Food Processing.

THESE GARMENTS ARE CUT RESISTANT, NOT CUT PROOF.

APPLICATIONS



GLASS INDUSTRY



METAL FABRICATION



RECYCLING



FOOD INDUSTRY



ANSI CUT SCORE

LIGHT HAZARD

- A1** 200 – 499 GRAMS
TYPICAL USES:
Light to Medium-Duty Assembly, Maintenance & Repair, Material Handling and Warehouse Shipping and Receiving
- A2** 500 – 999 GRAMS
TYPICAL USES:
Light to Medium-Duty Assembly, Automotive, Construction, Maintenance & Repair, Material Handling and Metal Handling
- A3** 1,000 – 1,499 GRAMS
TYPICAL USES:
Medium to Heavy-Duty Assembly, Automotive, Construction, Maintenance & Repair, Material Handling and Metal Handling

MEDIUM HAZARD

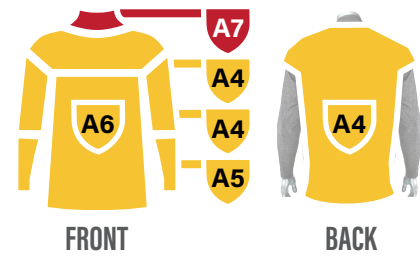
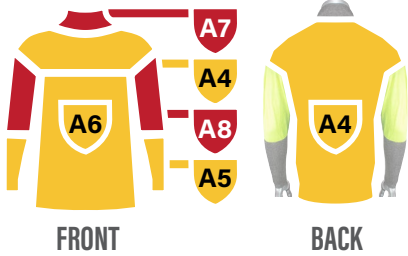
- A4** 1,500 – 2,199 GRAMS
TYPICAL USES:
Glass Fixture Installation, Medium-Duty Assembly, Automotive, Construction, Material Handling and Metal Handling
- A5** 2,200 – 2,999 GRAMS
TYPICAL USES:
Glass Handling, Heavy-Duty Assembly, Automotive, Construction, Material Handling, Metal Handling and Metal Stamping
- A6** 3,000 – 3,999 GRAMS
TYPICAL USES:
Glass Handling, Heavy-Duty Assembly, Automotive, Construction, Material Handling, Metal Handling and Metal Stamping

HEAVY HAZARD

- A7** 4,000 – 4,999 GRAMS
TYPICAL USES:
Glass Manufacturing, Heavy-Duty Assembly, Automotive, Construction, Metal Handling and Metal Stamping
- A8** 5,000 – 5,999 GRAMS
TYPICAL USES:
Glass Manufacturing, Heavy-Duty Assembly, Automotive, Construction, Metal Handling and Metal Stamping
- A9** 6,000+ GRAMS
TYPICAL USES:
Glass Manufacturing, Heavy-Duty Assembly, Automotive, Construction, Metal Handling and Metal Stamping

100 SERIES

The 100 Series garments feature a full fabric back and deliver significant cut and abrasion resistance to high-risk zones.



JACKET WITH HI-VIS SLEEVES AND THUMB LOOPS J100SP-3CM-HVB-TL

- Full-length zipper closure for easy on/off
- Hi-vis yellow biceps raise worker awareness and add A8 cut protection
- 3" comfort collar has cooling effect against the skin
- Thumb loops keep sleeves from riding up

PULLOVER P100SP

- 3" comfort collar has cooling effect against the skin
- Snug cuffs keep sleeves from riding up

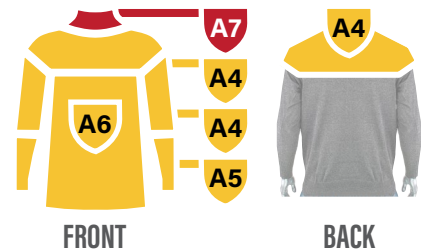
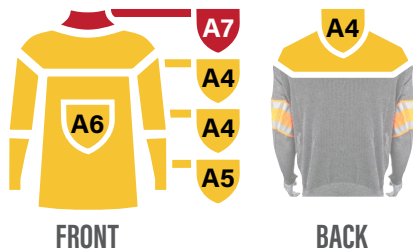
JACKET WITH THUMB HOLES J100SP-4CM-TH

- Full-length zipper closure for easy on/off
- 4" comfort collar has cooling effect against the skin
- Thumb holes keep sleeves from riding up

STYLE NUMBER	ZICFR	FABRIC	ANSI CUT LEVEL							COLLAR HEIGHT	CUFF	CLOSURE	COLOR	SIZES
			NECK	CHEST	ABDOMEN	UPPER BACK	LOWER BACK	BICEPS	FOREARMS					
P100SP	Yes	ATA® Fiber Technology	A7	A4	A6	A4	A4	A4	A5	3"	Elastic	Pullover	Dark Gray	S-3XL
J100SP-3CM-HVB-TL	Yes	ATA® Fiber Technology	A7	A4	A6	A4	A4	A8	A5	3"	Thumb Hole	Full Zip	Dark Gray	S-5XL
J100SP-4CM-TH	Yes	ATA® Fiber Technology	A7	A4	A6	A4	A4	A4	A5	4"	Thumb Hole	Full Zip	Dark Gray	S-2XL

145 SERIES

The 145 Series garments deliver significant cut and abrasion resistance to high-risk zones and feature a ¾ mesh back to allow for greater ventilation.



PULLOVER WITH HI-VIS / REFLECTIVE TAPED SLEEVES AND THUMB LOOPS

P145SP-3CM-HV2-TL

- Hi-vis orange with reflective bands on biceps increases safety compliance
- 3" comfort collar has cooling effect against the skin
- Thumb loops keep sleeves from riding up

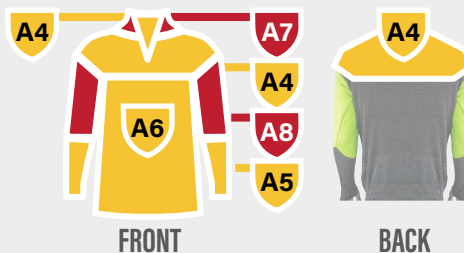
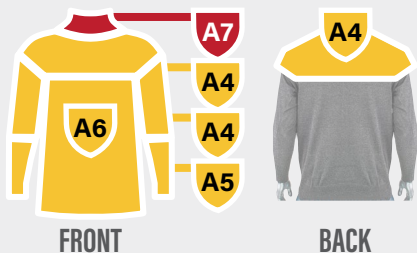
PULLOVER WITH MESH BACK AND THUMB HOLES

P145SP-2.5CM-TH

- ¾ mesh back helps air circulate, keeps the wearer cool
- 2.5" comfort collar has cooling effect against the skin
- Snug cuffs with thumb holes keep sleeves from riding up

STYLE NUMBER	21 CFR	FABRIC	ANSI CUT LEVEL							COLLAR HEIGHT	CUFF	CLOSURE	COLOR	SIZES
			NECK	CHEST	ABDOMEN	UPPER BACK	LOWER BACK*	BICEPS	FOREARMS					
P145SP-3CM-HV2-TL	Yes	ATA® Fiber Technology	A7	A4	A6	A4	-	A4	A5	3"	Thumb Loop	Pullover	Dark Gray	XS-XL
P145SP-2.5CM-TH	Yes	ATA® Fiber Technology	A7	A4	A6	A4	-	A4	A5	2.5"	Thumb Hole	Pullover	Dark Gray	S-3XL

*Mesh back area is made from same cut resistant fiber material, but due to the open mesh construction we do not assign an ANSI cut level



JACKET WITH MESH BACK AND THUMB HOLES
J145SP-4CM-TH

- Full-length zipper closure for easy on/off
- Knitted mesh back reduces overall garment weight
- 4" comfort collar has cooling effect against the skin
- Thumb holes keep sleeves from riding up

1/4 ZIP PULLOVER WITH HI-VIS SLEEVES AND THUMB HOLES
PJG145-3CM-HVB-TH

- Hi-vis yellow biceps raise worker awareness
- 3/4 mesh back helps air circulate, keeps the wearer cool
- 3" comfort collar has cooling effect against the skin
- Snug cuffs with thumb holes keep sleeves from riding up

STYLE NUMBER	21 CFR	FABRIC	ANSI CUT LEVEL							COLLAR HEIGHT	CUFF	CLOSURE	COLOR	SIZES
			NECK	CHEST	ABDOMEN	UPPER BACK	LOWER BACK*	BICEPS	FOREARMS					
J145SP-4CM-TH	Yes	ATA® Fiber Technology	A7	A4	A6	A4	-	A4	A5	4"	Thumb Hole	Full Zip	Dark Gray	XS-6XL
PJG145-3CM-HVB-TH	Yes	ATA® Fiber Technology	A7	A4	A6	A4	-	A8	A5	3"	Thumb Hole	1/4 Zip	Dark Gray	S-5XL

*Mesh back area is made from same cut resistant fiber material, but due to the open mesh construction we do not assign an ANSI cut level

190 SERIES

The 190 Series garments provide an overall high cut and abrasion resistant protection. Ventilated mesh back allows extra ventilation to keep worker cool and comfortable.



PULLOVER WITH REMOVABLE BELLY PATCH, HI-VIS SLEEVES AND THUMB LOOPS
P190BP-PP1-TL

- Removable belly patch adds A9 cut resistance and helps to reduce wear to overall garment (A5 cut resistance without patch)
- Hi-vis yellow biceps raise worker awareness
- 3/4 mesh back helps keep you cool
- 3" comfort collar has cooling effect against the skin
- Convenient integrated pen pocket on chest
- Thumb loops keep sleeves from riding up



PULLOVER WITH HI-VIS SLEEVES AND UNDERARM VENTS
P190SP3CMHVBUV-PP1

- Hi-vis yellow biceps raise worker awareness
- 3" comfort collar has cooling effect against the skin
- Convenient pen pocket on the chest
- Underarm vents allow for greater ventilation to help keep worker cooler



PULLOVER WITH HI-VIS SLEEVES
P191SP-PP1-TL

- Hi-vis yellow biceps raise worker awareness
- 4" comfort collar has cooling effect against the skin
- Convenient integrated pen pocket on chest
- Thumb loops keep sleeves from riding up

STYLE NUMBER	21 CFR	FABRIC	ANSI CUT LEVEL								COLLAR HEIGHT	CUFF	CLOSURE	COLOR	SIZES
			NECK	CHEST	ABDOMEN	BELLY PATCH	UPPER BACK	LOWER BACK*	BICEPS	FOREARMS					
P190BP-PP1-TL	Yes	ATA® Fiber Technology	A7	A5	A5	A9	A5	-	A8	A5	3"	Thumb Loop	Pullover	Dark Gray	XS-2XL
P190SP3CMHVBUV-PP1	Yes	ATA® Fiber Technology	A7	A5	A5	-	A5	-	A8	A5	3"	Elastic	Pullover	Dark Gray	M-4XL
P191SP-PP1-TL	Yes	ATA® Fiber Technology	A7	A5	A5	-	A5	-	A8	A5	4"	Thumb Loop	Pullover	Dark Gray	S-2XL

*Mesh back area is made from same cut resistant fiber material, but due to the open mesh construction we do not assign an ANSI cut level

600 SERIES

The 600 Series garments provide an overall higher cut protection in a lightweight option to offer workers confident protection and comfort. Paired with a $\frac{3}{4}$ mesh back, these garments are the ultimate solution for lightweight but heavy-duty protection.



PULLOVER WITH HI-VIS SLEEVES AND REMOVABLE BELLY PATCH P601BP4CMHVBPP1TH

- Removable belly patch provides A9 cut protection and is removable for easy replacement when worn by use, helping to prolong the overall lifetime of the garment
- 4" comfort collar has cooling effect against the skin
- Convenient integrated pen pocket on chest
- Thumb holes keep sleeves from riding up

HI-VIS JACKET WITH THUMB HOLES J645HV-2.5CM-TH

- Hi-vis yellow jacket allows workers to be seen in low-light environments for greater awareness
- 2.5" comfort collar has cooling effect against the skin
- Thumb holes keep sleeves from riding up

STYLE NUMBER	21 CFR	FABRIC	ANSI CUT LEVEL										CLOSURE	COLOR	SIZES
			NECK	CHEST	ABDOMEN	BELLY PATCH	UPPER BACK	LOWER BACK*	BICEPS	FOREARMS	COLLAR HEIGHT	CUFF			
P601BP4CMHVBPP1TH	Yes	ATA® Fiber Technology	A9	A8	A8	A9	A8	-	A8	A7	4"	Thumb Hole	Pullover	Dark Gray	S-6XL
J645HV-2.5CM-TH	Yes	ATA® Fiber Technology	A9	A8	A8	-	A8	-	A8	A7	2.5"	Thumb Hole	Full Zip	Hi-Vis Yellow	S-3XL

*Mesh back area is made from same cut resistant fiber material, but due to the open mesh construction we do not assign an ANSI cut level

CHAPS



FRONT



BACK



FRONT

FULL LEG CHAPS WITH ADJUSTABLE HOOK AND LOOP STRAPS CHAPS-2.5-MR

- Front and back A9 cut protection on the high-risk areas of the leg
- Adjustable hook & loop leg straps for a more customized fit
- Antimicrobial treated yarn to help discourage bacterial growth

CUT RESISTANT CHAPS WITH REINFORCEMENT AND ADJUSTABLE STRAPS CHAPS-2.5

- ANSI A6 over all with a second layer providing ANSI A9 cut protection to the lap, groin and thighs
- Adjustable straps customize the fit at the waist and help the legs stay comfortably in place
- Antimicrobial treated yarn to help discourage bacterial growth

Chaps			ANSI CUT LEVEL				CLOSURE	COLOR	SIZES
STYLE NUMBER	ZI CFR	FABRIC	WAIST	LAP/GROIN	LEG (FRONT)	LEG (BACK)			
CHAPS-2.5-MR	Yes	ATA® Fiber Technology	A9	A9	A9	A9	Adjustable straps	Dark Gray	36" & 40"
CHAPS-2.5	Yes	ATA® Fiber Technology	A6	A9	A6	-	Adjustable straps	Dark Gray	28", 32", 34", 38", 40"
CHAPS-1	Yes	ATA® Fiber Technology	A6	A6	A6	-	Adjustable straps	Dark Gray	25"
CHAPS155	Yes	ATA® Fiber Technology	A6	A9	A6	-	Adjustable straps	Dark Gray	30"

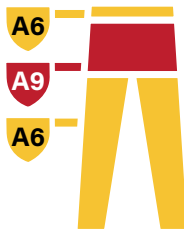
APRON



FRONT

CHAPS WITH ADJUSTABLE STRAPS CHAPS-1

- ANSI A6 cut protection for the lap/groin
- Adjustable straps customize the fit
- Antimicrobial treated yarn to help discourage bacterial growth



FRONT

CHAPS WITH REINFORCEMENT AND ADJUSTABLE STRAPS CHAPS155

- ANSI A9 cut protection for the lap/groin, ANSI A6 everywhere else
- Adjustable straps customize the fit
- Antimicrobial treated yarn to help discourage bacterial growth



FRONT

APRON WITH ADJUSTABLE STRAPS APRON-1

- ANSI A6 cut protection throughout
- Adjustable straps customize the fit at the top and in the waist
- Antimicrobial treated yarn to help discourage bacterial growth

Apron

STYLE NUMBER	Z1 CFR	FABRIC	ANSI CUT	COLOR	SIZES
APRON-1	Yes	ATA® Fiber Technology	A6	Dark Gray	35"

Customize Your Cut Resistant Wear

1. Select the Series

SERIES	DESCRIPTION	CONFIGURATION
100 SERIES	Standard all dark gray garment with solid back	Jacket or Pullover
145 SERIES	Standard all dark gray garment with mesh back	Jacket or Pullover
150 SERIES	Dark gray belly shirt	Belly Shirt
190 SERIES	Cut level A5 garment with mesh back	Pullover Only
600 SERIES	Next generation garment, lighter weight with high cut	Jacket or Pullover

SERIES	DESCRIPTION	CONFIGURATION
CHAPS-1	Belted waist with front of leg protection	-
CHAPS155	Belted waist with removable belly patch	Belly patch
CHAPS-2.5	Belted waist with second layer of cut protection	Double layer
CHAPS 2.5-MR	Belted waist with wrap around leg protection	-
APRON-1	Chest, abdomen and leg protection	-

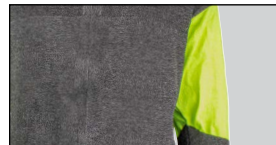
2. Add on:



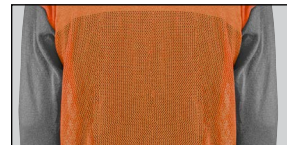
CM
Coolmax comfort collar length



HV2
Hi-vis tape on biceps



HVB
Hi-vis knitted biceps



HVBK
Hi-vis orange back



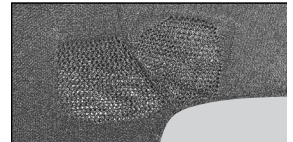
PP1
4 3/4" x 2 1/2" pen pocket with seam
sewn down the middle (top to bottom)



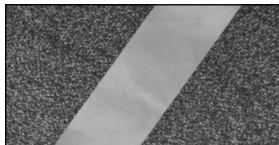
PP2
4 3/4" x 2 1/2" pen pocket with no seam



PPB
Pen pocket with same dimensions as PP1
but sewn onto left bicep



UV
Underarm vents



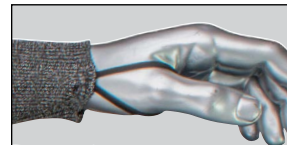
HVS
Hi-vis suspender stripe on front
and back of garment



BP
Removable belly patch



TH
Thumb hole



TL
Thumb loop

LEARN MORE ABOUT CUSTOMIZING YOUR KUT GARD® ATA® PREVENTWEAR™ GARMENTS
Contact us at (855) 284-6800 or visit www.pipusa.com





PROTECTIVE INDUSTRIAL PRODUCTS, INC.

518-861-0133 | 800-262-5755

sales@pipusa.com | www.pipusa.com

**KUT
GARD®**